

Double Door Kit

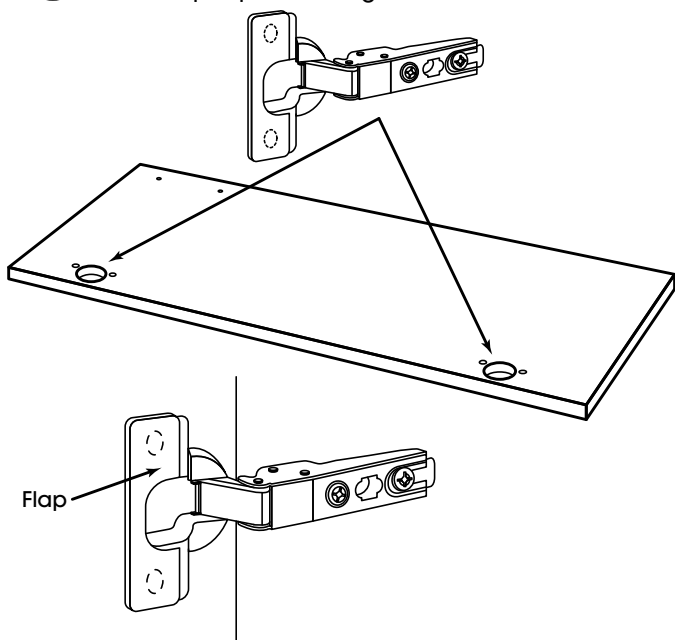
Rubbermaid Home Products
1147 Akron Road
Wooster, OH 44691
www.rubbermaid.com
1-888-895-2110

A **NewellRubbermaid** Company
L8-3G02-P0

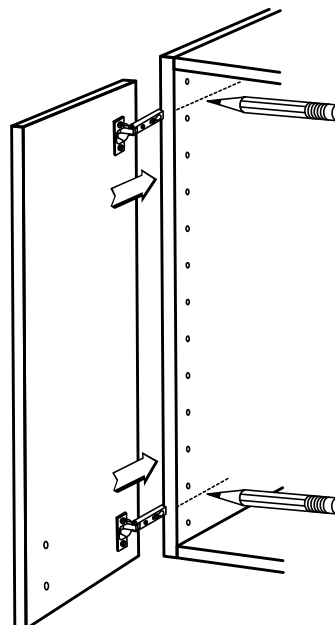
Description	Assembly Letter	Qty.
HINGES	A	4
HINGE PLATES	B	4
DOOR	C	2
EURO SCREW	D	8
HINGE COVER	E	4
SCREW, #6 x 5/8" PHILLIPS PANHEAD	F	4
HANDLE, 96MM	G	2

Please check that you have all parts before beginning and follow the instructions carefully.

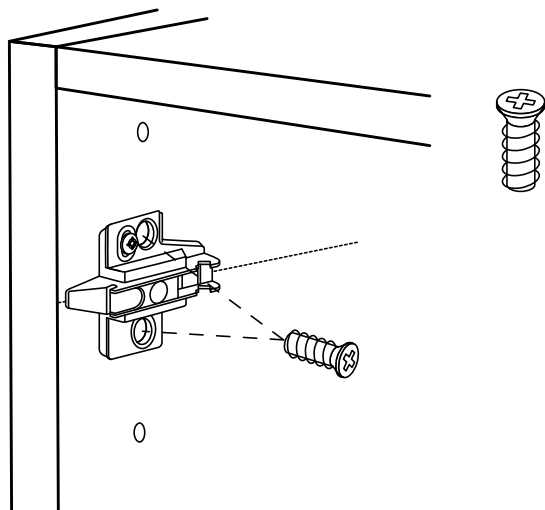
- 1** Insert Hinges (A) into hinge holes on door (C) with Hinge arm sticking out past door edge. Line up holes and snap flap down. Hinge should be secure.



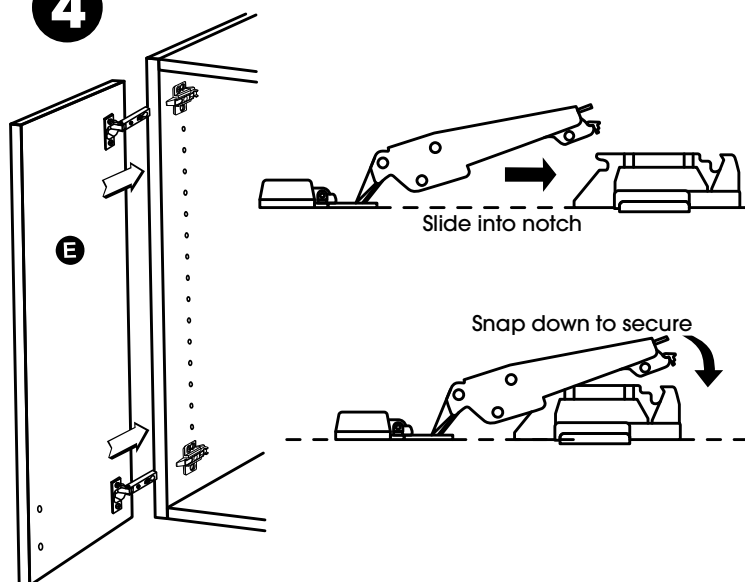
- 2** Position door where desired on side panel and lightly mark with pencil where Hinge arms rest. Note: Hinge arms will be centered in the 1" space between side panel holes.



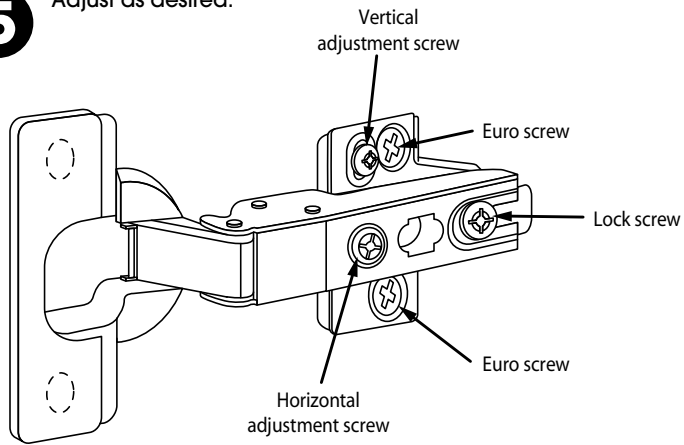
- 3** Fasten Hinge Plates (B) (small extension forward) to side panels with Euro screws (D). Note: Center of Hinge Plate coincides with pencil mark.



- 4** Attach door Hinges to Hinge Plates and snap into place.



5 Adjust as desired.

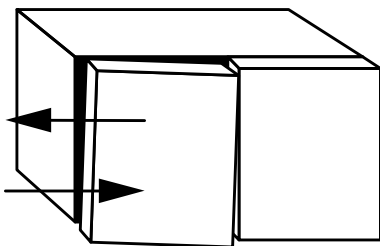


GAP ADJUSTMENT: Loosen lock screw, adjust gap by turning horizontal screw, tighten lock screw.

DEPTH ADJUSTMENT: Loosen lock screw, adjust depth, tighten lock screw.

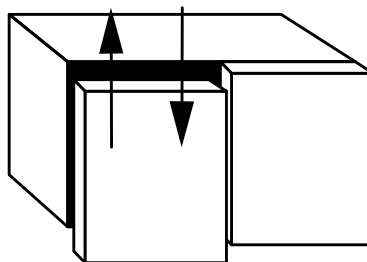
HEIGHT ADJUSTMENT: Loosen vertical adjustment screws, adjust door height, tighten screws.

HORIZONTAL ADJUSTMENT



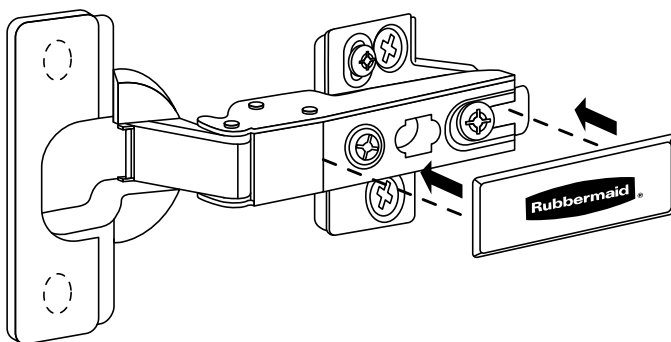
Adjusts gap size between doors.

VERTICAL ADJUSTMENT



For doors not flush at top or bottom.

6 Snap Hinge Cover (E) onto Hinge.



7 Attach Handle (G) with 1" screws (F).

