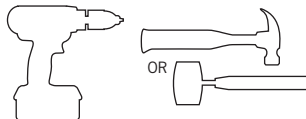


## 14" & 19" Depth Dovetail Drawer Kits

2101798

Rubbermaid Incorporated,  
Huntersville, NC 28078-1801  
U.S.A. 1-888-895-2110  
Canada 1-866-595-0525  
[www.rubbermaid.com](http://www.rubbermaid.com)

Tools Required

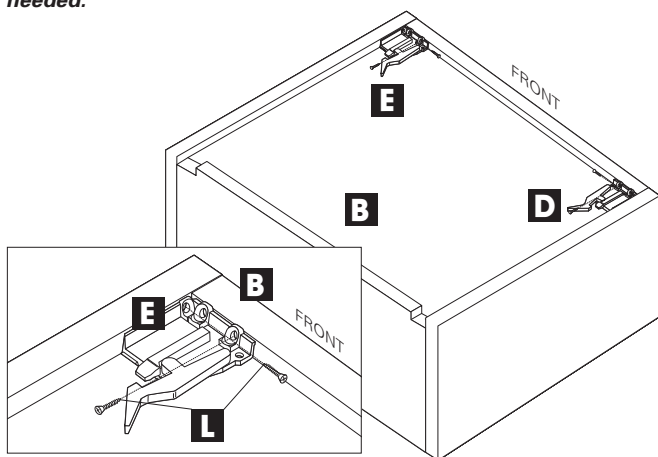


Please check that you have all parts before beginning and follow the instructions carefully.

Description	Letter	Qty	Description	Letter	Qty
Decorative Drawer Front (sold separately)	A	1	Handle with Screws (sold separately)	H	1
Dovetail Drawer Box	B	1	Screw, #7 x 1/2" Wood Screw	I	2
Undermount Glide Set (Left & Right)	C	1	Screw, 6mm x 10mm Euro Screw	J	6
Drawer Lock Clip (Right)	D	1	Screw, #8 - 32 x 7/8" Notched Machine Screw	K	2
Drawer Lock Clip (Left)	E	1	Screw, #6 x 5/8" Wood Screw	L	4
Door Bumper Set of 4	F	1	Screw, #8 x 1" Wood Screw	M	2
Adjusters	G	2			

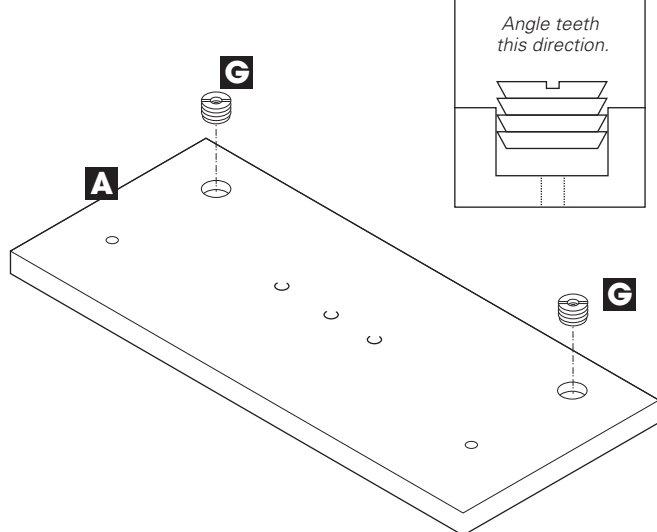
### STEP 1

Attach (1) Drawer Lock Clip Right (D) and Drawer Lock Clip Left (E) to underside of Dovetail Drawer Box (B) using (4) Screw, #6 x 5/8" Wood Screws (L). **Note: Attach clips to forward most corners and screw into front of drawer box using clip's hole locations. Adjust clips as needed.**



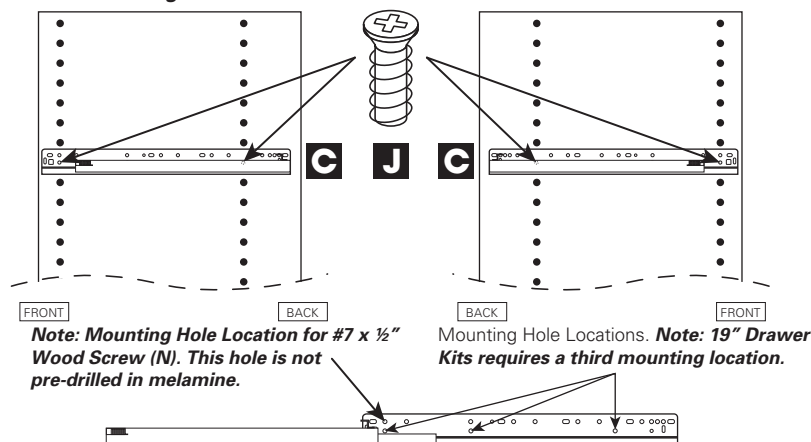
### STEP 3

Pound adjusters into back of drawer face panel.



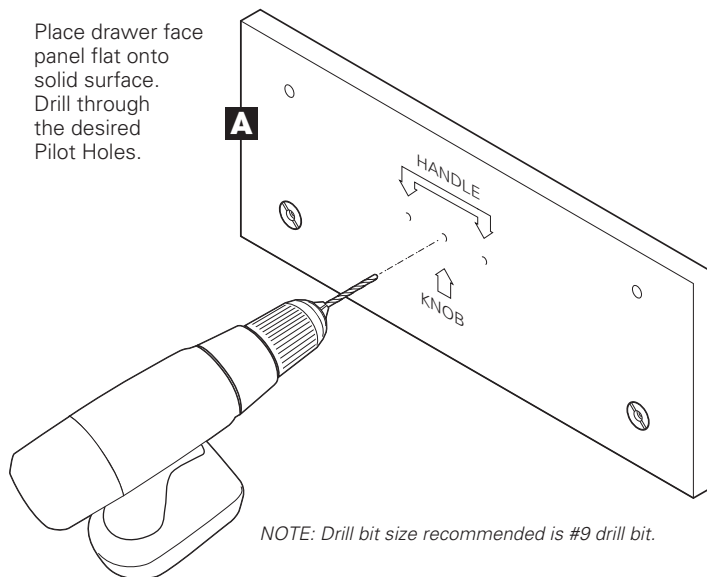
### STEP 2

Attach the Drawer Glides (C) to the Vertical Panels with (4) Euro Screws (J) for the 14" Drawer Kits. For the 19" Drawer Kits attached with (6) Euro Screws (J). Add (2) additional screws, #7 x 1/2" Wood Screw, (I) in glide location shown. **Note: Extending the glides aids in accessing the hole locations.**



### STEP 4

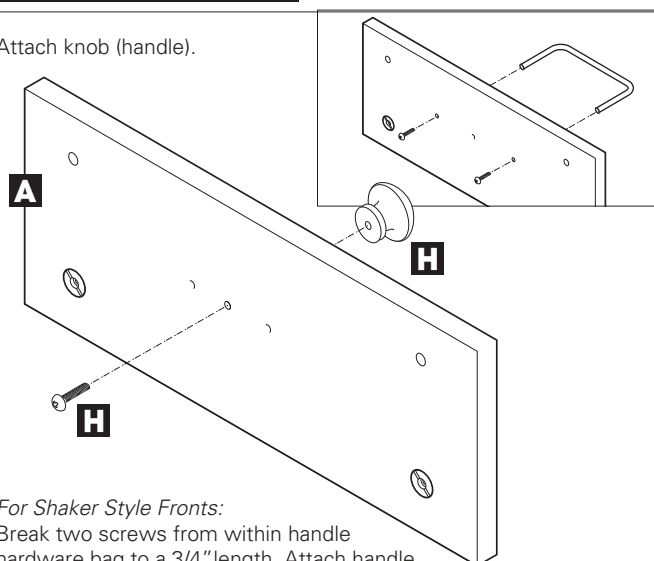
Place drawer face panel flat onto solid surface. Drill through the desired Pilot Holes.



NOTE: Drill bit size recommended is #9 drill bit.

### STEP 5

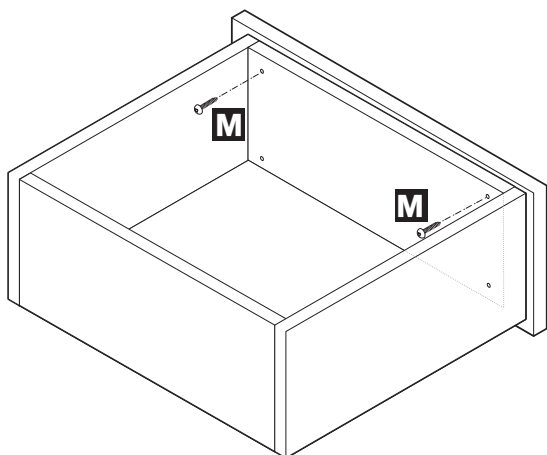
Attach knob (handle).



*For Shaker Style Fronts:*  
Break two screws from within handle hardware bag to a 3/4" length. Attach handle.

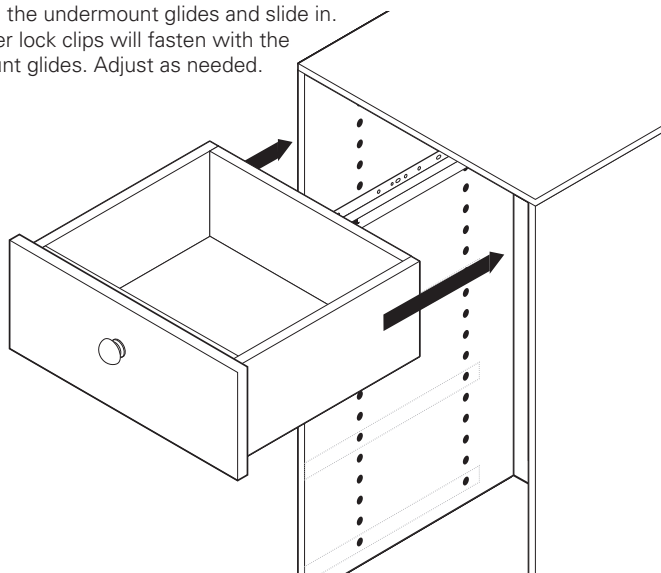
### STEP 7

Secure top of face.



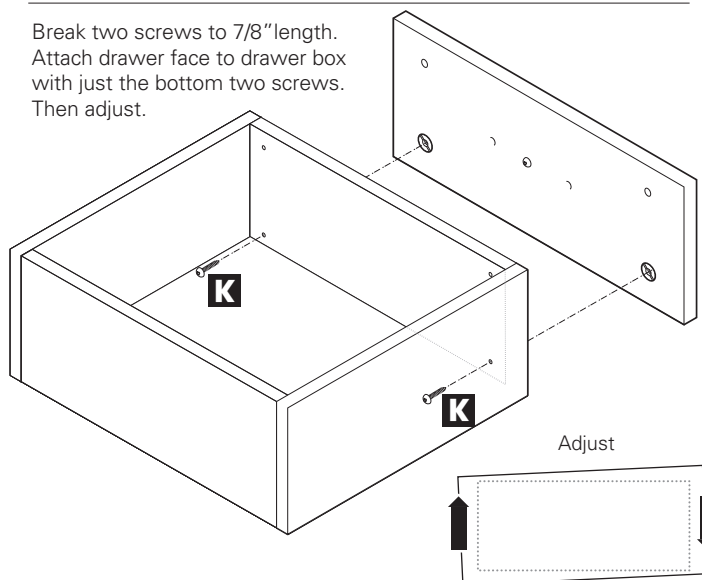
### STEP 8

Fully extend the undermount glides. Place the drawer on the undermount glides and slide in. The drawer lock clips will fasten with the undermount glides. Adjust as needed.



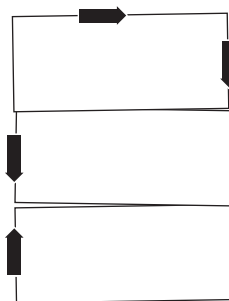
### STEP 6

Break two screws to 7/8" length. Attach drawer face to drawer box with just the bottom two screws. Then adjust.



### TIPS

Put all drawers into cabinet then adjust face panel position before tightening screws.



Drawer clips have integrated height adjustment to aid in alignment.

